

Notice: All 3 installation methods meet UL requirement. The first installation method meets DLC requirement if fixtures are installed without adjusting viewing angle. The second and third installation methods do not meet DLC requirement.

This product is available with photocell. Installations remain the same with or without it.

Standard wire:

L/live wire: Black\Brown

N/null wire: White\Blue

Ground wire: Green\Yellow-green

Warning/Advertisement:

MIN 75 °C SUPPLY CONDUCTOR

THIS PRODUCT MUST BE INSTALLED IN ACCORDANCE WITH THE APPLICABLE INSTALLATION CODE BY A PERSON FAMILIAR WITH THE CONSTRUCTION AND OPERATION OF THE PRODUCT AND THE HAZARDS INVOLVED

LES FILS D'ALIMENTATION 75 °C MIN

CE PRODUIT DOIT ÊTRE INSTALLÉ SELON LE CODE D'INSTALLATION PERTINENT, PAR UNE PERSONNE QUI CONNAÎT BIEN LE PRODUIT ET SON FONCTIONNEMENT AINSI QUE LES RISQUES INHÉRENTS.

LED Wall pack Light Instruction

Application :

Available in tunnel (except for motor vehicle tunnel), workshop, warehouse, factory, house, building exterior, etc.

Cautions:

1. Can not use the electric generator to test the LED lamp.
2. Please abide by related country, regional and local law and regulations when install this fixture.
3. Please turn off the power before installation or maintenance.
4. Proper earth grounding is required to ensure safety.

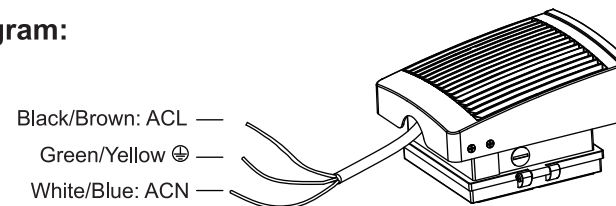
Notice:

1. To avoid possibility of electrical shock or fire, the installation personnel must have professional electric knowledge.
2. Please wear gloves to avoid injury before installation.
3. If any smoke or spark of the wire happened, please turnoff the power immediately and notify relevant personnel.

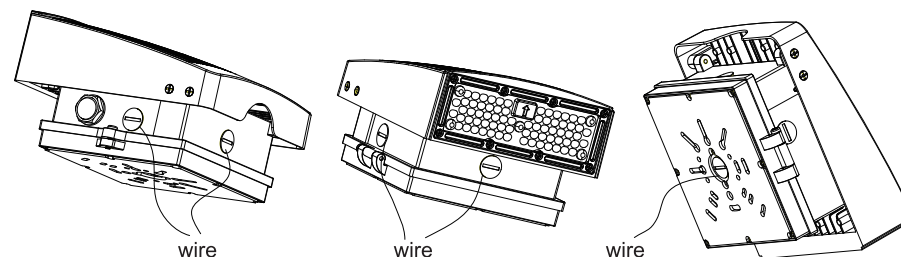
Attention:

1. Please check if there is any damage during shipping. If so, please contact manufacturer timely.
2. Please read the installation instruction carefully to check whether all the accessories are complete. After confirmation, then install the fixture according to installation steps.

Wiring Diagram:



5 different outlets are available for driver wire, see below picture.



The installation of the product can be used when it is marked with "✓".

✓ Installation I:

Wiring from the bottom of luminaire

1. Attached EVA pad on the back of wall pack. Loosen the screws on the back cover of led fixture with screwdriver. (See figure 1)
2. Drill holes on the back cover corresponding to the wiring holes on junction box. Unscrew the plug. (See figure 2)

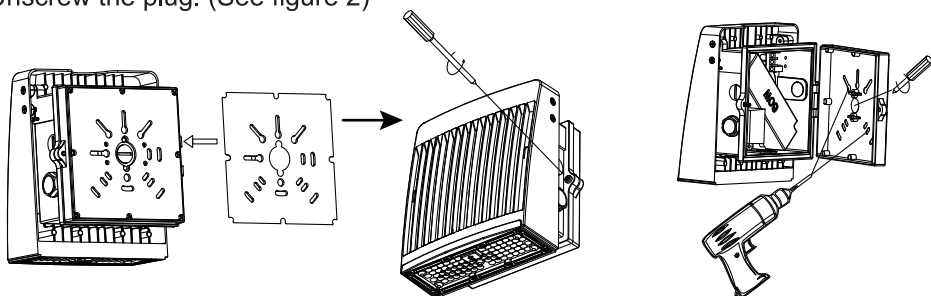


Figure 1

Figure 2

3. Pull mains power line through the back cover into fixture, fix the wall pack onto the junction box with screws. Connect wires with insulation measures. (see figure 3)
4. Tighten the screws on the back cover with a screwdriver. Well installed when the led fixture can be adjusted to 15°, 30°, or 45° after screws be loosen. (see figure 4)

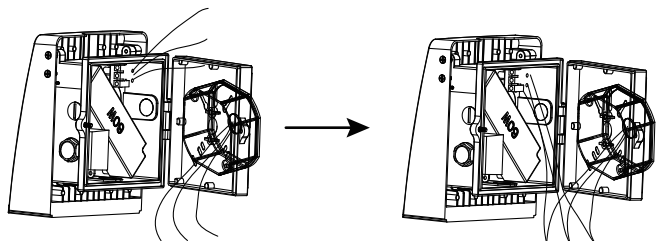


Figure 3

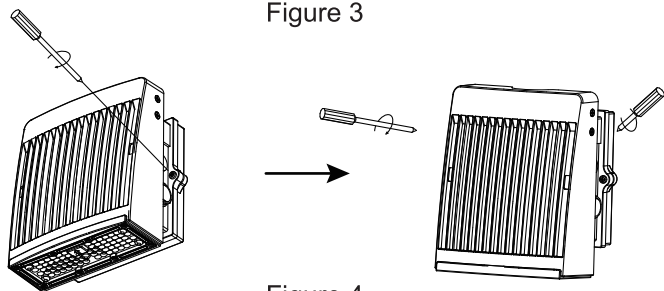


Figure 4

□ Installation II:

1. Put the bracket on the wall, draw a point with a pencil or hard project through the bracket hole. Install the water joint on the wiring hole. (See figure 5)
2. Drill holes on the points and driven into expansion screws. Fix the bracket onto the wall with nuts, flat washers and spring washers. (See figure 6)
3. Loosen the screws on the back cover and connect wires with insulation measures. Then tighten the screws. Loosen screws on the bracket and adjust the wall pack into required angle. Tighten screws again. (See figure 7)

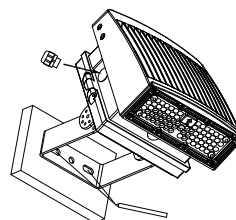


Figure 5

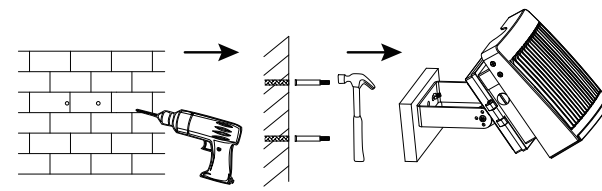


Figure 6

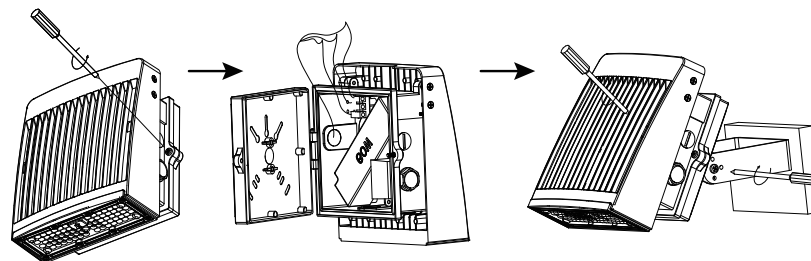


Figure 7

□ Installation III:

1. Take out the fixture, connect the output wire of the fixture to mains and make good protection on the wiring connection. (See figure 8)
2. Put the wires into threaded rod, then screw the fixture in the threaded rod. (see figure 9)
3. Loosen the fix screw of the fixture bracket, adjust viewing angle, tighten the screw then finish installation. (see figure 9)

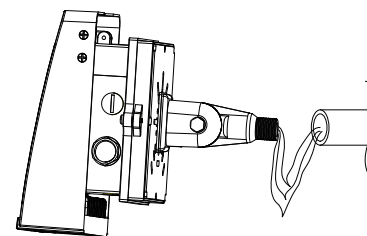


Figure 8

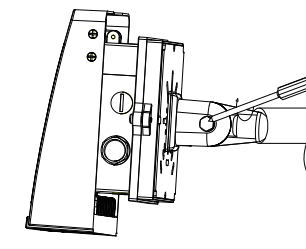


Figure 9