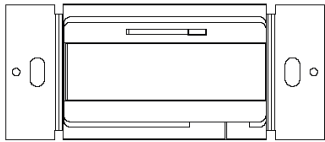
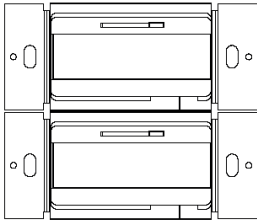


Dimmer - Single Pole or Three Way
Rated at 120VAC, 60Hz,
600W Incandescent / Halogen Dimmer
2A, 150W Dimmable CFL & Dimmable LED



Multigang Installations

In multi-dimmer installations, the capacity of dimmer is different. Refer to the below chart.



Only INCANDESCENT Dimmer Rating:

Cat. No.	Single-Gang Rating	Double-Gang Rating	Triple-Gang Rating
Decorator	600 W	500 W, 500 W	400 W, 400 W, 400 W

Important Notes

Please read before installing

- CAUTION:** Use only with 120V incandescent/halogen, CFL or LED light fixtures.
- Turn off power at circuit breaker or fuse before wiring.
- Only 3-way switch can be used with 3-way dimmer.
- Use **copper** wire only.
- For supply connection, use wires rated for at least 75°C.

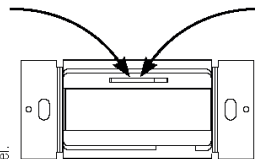
Dimming Range Adjustment

- Turn dimmer on and move slider down to the bottom.
- Turn knob down until lowest light level is achieved and light output is stable for all bulbs.
- Turn dimmer off, then back on to verify bulbs.
- Turn knob up lightly and do step 3 again if all bulbs do not turn on.
- Once all bulbs are dimming properly, install faceplate.

DMD type:

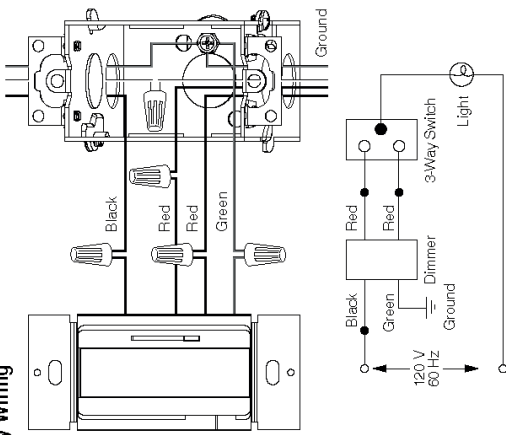
Slider: Controls light level.

Up increases light level, down decreases light level.



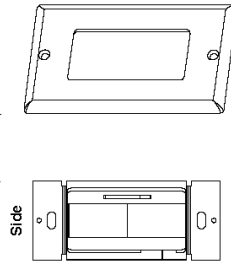
Switch: Turns lights ON and OFF

3-Way Wiring



3. Mounting dimmer to wallbox.

Push wires carefully into the wallbox, install wallplate.



4. Turning power ON.

Turn power ON.

CAUTION - To Reduce The Risk of Overheating and Possible Damage to Other Equipment, Do Not Install to Control a Receptacle, a Motor-Operated Appliance or a Fluorescent Lighting Fixture or a Transformer Supplied Appliance.

ATTENTION - Pour réduire le risque de surchauffe et les possibles dommages à d'autres équipements, ne pas installer pour contrôler un réceptacle, un appareil à moteur ou un luminaire fluorescent ou un appareil fourni par transformateur.

Warranty Information

If within one(1) year from the date of purchase, this product fails due to a defect in material or workmanship, we will repair or replace it, at its sole option, free of charge. This warranty does not apply to: (a) damage to units caused by accident, droppage or abuse in handling, acts of God or any negligent use; (b) units which have been subject to unauthorized repair, opened, taken apart or otherwise modified; (c) unit not used in accordance with instructions; (d) damages exceeding the cost of the products. This warranty service is available by returning the products with proof of purchase date and a description of the problem to dealer from whom the unit was purchase.