

## Linear Strip Fixture

CCT & Power Selectable



### Built-in Sensor



### Pre-Set :

Detection Area : 100%  
 Hold Time : 5s  
 Stand-by Period : 0s  
 Stand-by Dim Level : 10%  
 Daylight Sensor : Disable

### Option:



## Technical Specifications

Model No.:	RDS-TCS45-4FT347-CCT-A1-S	RDS-TCS90-8FT347-CCT-A1-S
Size	4 ft	8 ft
Watt Selectable	30W/35W/40W/45W	60W/70W/80W/90W
Voltage	120-347V	
Dimming	0-10 V	
Sensor	Microwave Motion Sensor	
CCT Slectable	3000K/4000K/5000K	
Lumens	3900LM - 5850 LM	7800LM - 11700 LM
Dimensions	48" x 2.6" x 2.79"	96" x 2.6" x 2.79"

### Features

0-10 V Dimming  
 Safe for food service applications  
 For single or continuous row mounting  
 5 years warranty

### Electrical

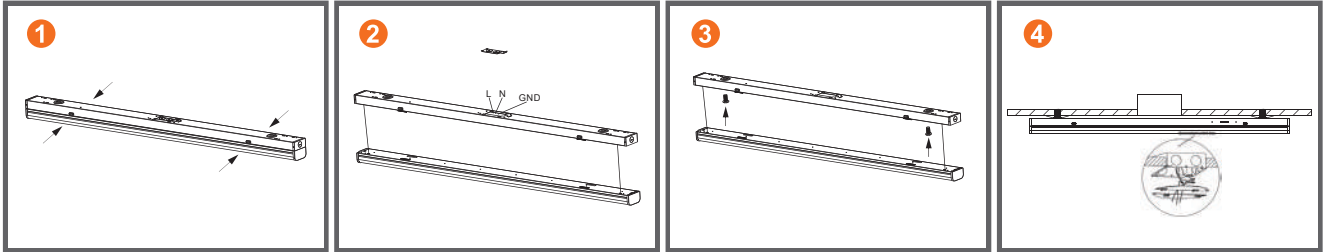
Input voltage: 120-347VAC  
 Power factor: >0.9  
 THD: <20%

### Performance

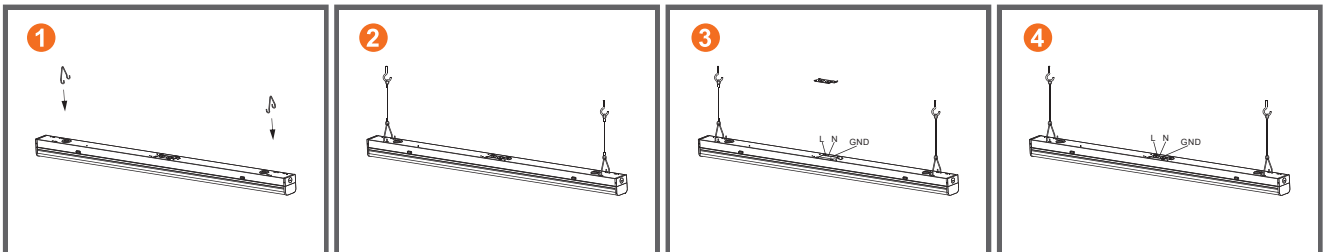
Rated lifetime L70 : 50/000 Hours  
 CRI > 80  
 Optional : Sensor & Emergency

### Installation

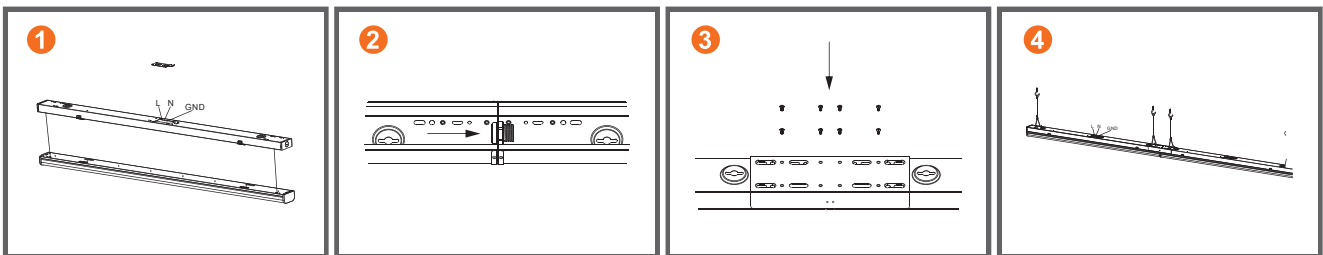
#### Surface Mount Installation



#### Chain Hang Installation

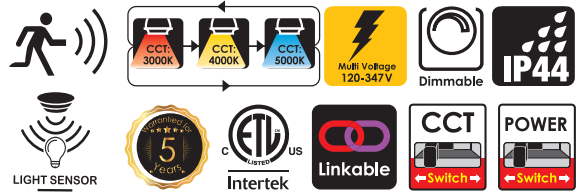


#### Linkable Installation



### Dimensions

Models	L	W	H
RDS-TCS45-4FT347-CCT-A1-S	48"	2.6"	2.79"
RDS-TCS90-8FT347-CCT-A1-S	96"	2.6"	2.79"



### Image Show

