

Dimmable



WATT  
Switch



Linkable  
MAX  
1000W



Multi Voltage  
120-347V



CCT  
Switch



Warranted for  
5  
Years

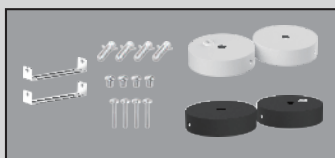


UL  
CERTIFIED

### Suspension Installation



Suspension Kit(6ft Rope)  
(Inside the Box)



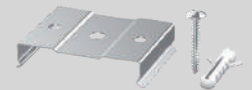
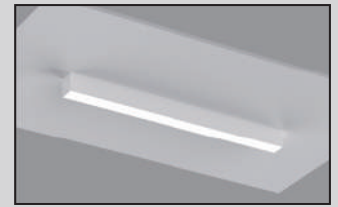
4.7" Round Canopy  
(Sell Separately)

### Wall Installation



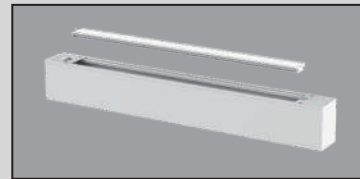
Wall Mount kit  
(Sell Separately)

### Surface Installation



Surface Mount Kit  
(Sell Separately)

Upper Module  
(Sell Separately)



Lumen Up Side :30%  
Lumen Down Side : 70%

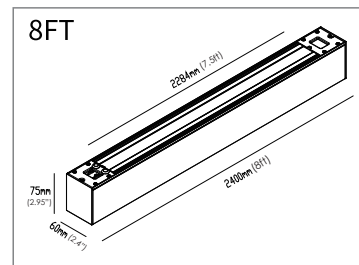
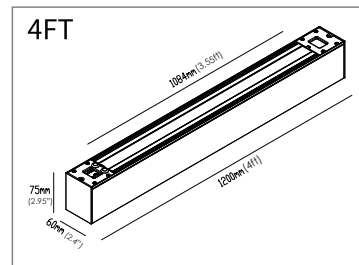
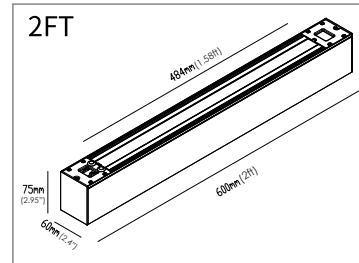
### General Information

Series	Model	Length	Wattage / Lumen	Color	CCT	Input Vol
CCT & Wattage Adjustable	VO-ALW15FT2-347-3WAY-P-W-XX-X VO-ALW15FT2-347-3WAY-P-B-XX-X	2FT	15W/13W/10W 1950/1690/1300LM	White Black	3000K 4000K 5000K Adjustable	120-347V
	VO-ALW50FT4-347-3WAY-P-W-XX-X VO-ALW50FT4-347-3WAY-P-B-XX-X	4FT	50W/40W/30W 6500/5200/3900LM	White Black		
	VO-ALW100FT8-347-3WAY-P-W-XX-X VO-ALW100FT8-347-3WAY-P-B-XX-X	8FT	100W/80W/60W 13000/10400/7800LM	White Black		

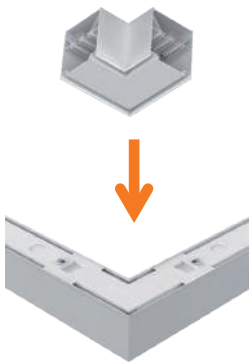
XX can be U for UP only / D for DOWN only / UD for UP & DOWN

Efficiency	130lm/W
IP Rating	20
Warranty	5 Years (50000Hrs)
Dimming	0-10V dimming
Environment	Indoor
Working Temperatur	-25°C-45°C
Relative Humidity	10%-90%RH
Color Finish	White, Black
Frame Material	Aluminum
Diffuser	PC
LIFESPAN (Hrs)L80B20 @25°C	≥50000Hrs
CRI	>80
CCT	3000K-4000K-5000K
Beam Angle	110°
Input Voltage	120-347V 50/60Hz
Output Voltage	DC:28-42V
Power Factor	>0.9
THD	≤20%
Insulation Class	Class I
Certificates	UL, FCC, DLC
Overload Protection	103~120%
Overload Protection Type	Auto Resume

### Dimension:

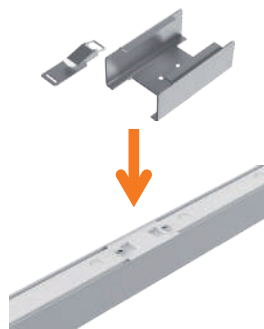


### Accessories :



**Buckle Join For "L" Connection**

(Sell Separately)



**Buckle Join For "I" Connection**

(Sell Separately)



**PC Diffuser for "I" Connection**

(Sell Separately)



Dimmable

