

## Installation Guide

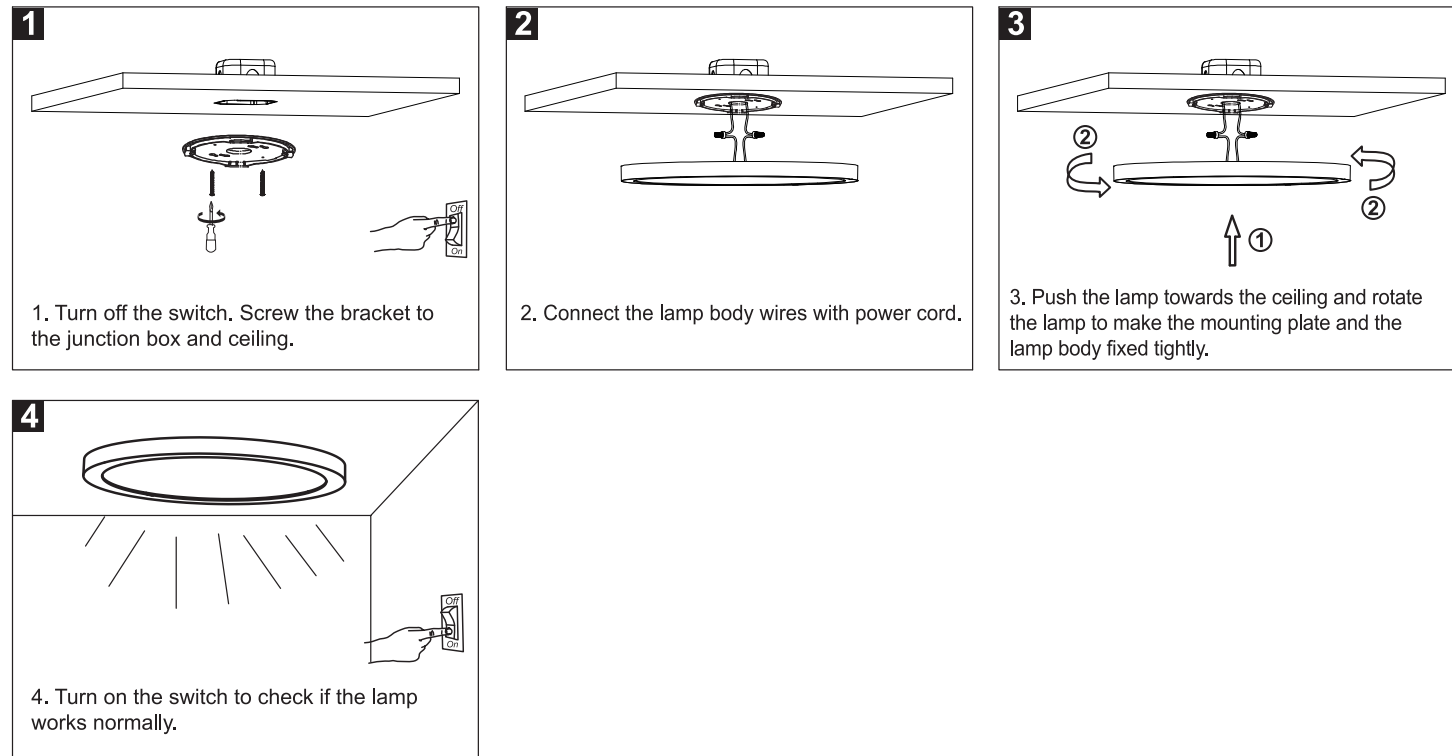
### IMPORTANT SAFETY INFORMATION

- 1. WARNING : RISK OF SHOCK** House electric current can cause painful shock or serious injury unless handled properly. For your safety, always remember to :  
 A : Turn off the power supply at the fuse or circuit breaker box before you install the fixture.  
 B : Double-check all connections to be sure they are tight and correct.
- This fixture is designed for use in a circuit protected by a fuse or circuit breaker. It is also designed to be installed in accordance with local electrical codes. If you are unsure about your wiring, consult a qualified electrician or local electrical inspector, and check your local electrical code.
- 3. WARNING : RISK OF CUTS** Some metal parts in the fixture may have sharp edges. To prevent cuts and scrapes, wear gloves when handling the parts.
- Account for small parts and destroy packing material, as these may be hazardous to children.
- The light source contained in this luminaire shall only be replaced by the manufacturer or his service agent or a similar qualified person.
- Terminal block and the suspending accessories is not included. Installation must be performed by a qualified person.

### Product Specification

| Wattage (W) | Voltage (V) | Rated Input Frequency (Hz) | Beam Angle (°) | Dimension (DxH) |
|-------------|-------------|----------------------------|----------------|-----------------|
| 30W         | AC120V      | 60Hz                       | 120            | 16 x 0.95 inch  |

### Surface Mounted Installation



### Caution

- 1. WARNING : Risk of fire.**
- Before installing your lighting fixture, thoroughly review enclosed installation manual. If you do not have sufficient electrical wiring experience, please refer to a do-it-yourself wiring handbook or have your fixture installed by a qualified licensed electrician. All electrical connections must be in accordance with local standards. Reliable operating temperature is -20 to +40 degrees
- pls obey fire prevention regulations, do not cover the fixture with any heat insulated materials.
- Do not change the LED light source or driver inside under any circumstance.