



# Innovation & Quality

www.votatec.ca

# 4ft Glass T8 LED Tube

5Way CCT Adjustable/ UL Type A+B

Project : \_\_\_\_\_  
 Type : \_\_\_\_\_  
 Drawn by : \_\_\_\_\_  
 Catalogue No. : \_\_\_\_\_  
 Date : \_\_\_\_\_



## Specifications

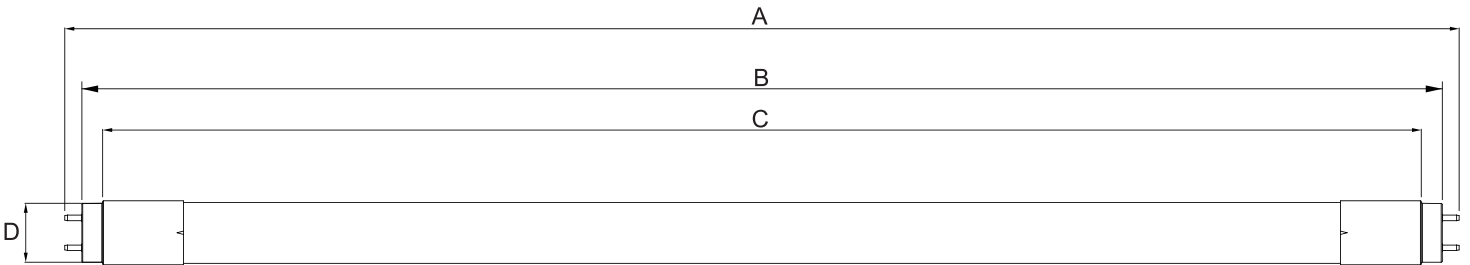
| Model No.              |                         | <input type="checkbox"/> PV-4FT-18WAB4XS(1600K) |
|------------------------|-------------------------|---|
| General                | Size                    | 4'  |
|                        | Watts                   | 18W   |
|                        | Target Lamp             | 32W   |
|                        | Lumen                   | 2250LM  |
|                        | Base                    | G13   |
|                        | CCT                     | 3000K/3500K/4000K/5000K/6500K                   |
|                        | Volts                   | AC120-347V                                      |
|                        | CRI                     | >83   |
|                        | Beam Angle              | 200°  |
|                        | Hours Rated             | 50,000 hours                                    |
|                        | Max Compartment Size    | Length: 47.72in Width: 1in                      |
|                        | Ballasting Requirements | Ballast Compatible and Ballast Bypass           |
| Electrical             | Operating Frequency     | 50-60 Hz  |
|                        | Power Factor            | >0.9  |
|                        | Wiring                  | Any 2 pins connected                            |
|                        | Surge Protection        | Ring Wave Surge 2.5KV                           |
| Physical               | Operating Temperature   | -20°C (-4°F) to 45°C (113°F)                    |
|                        | Housing Material        | Glass with PET Coating                          |
| Additional Information | Housing Color           | Milky   |
|                        | Net Weight (Kg)         | 0.22  |
|                        | Additional Info         | Multi-Voltage                                   |
| Compliance             | Warranty                | 5 years   |
|                        | Safety Listing          | cULus   |
|                        | Location Rating         | Dry   |
|                        | DLC Approved            | Under certification                             |
|                        | DLC ID                  | TBD   |



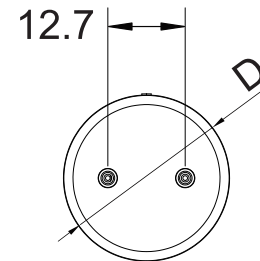
### Features & Specifications

|                         |  |
|-------------------------|--|
| <b>Construction</b>     | <ul style="list-style-type: none"> <li>• Type A+B, work with ballast or AC120-347V direct power input, provides easy installation</li> <li>• High Compatibility: Work with 130+electronic ballasts, including emergency&amp;dimming ballasts</li> <li>• Single and double-ended, any two pins connect works</li> <li>• 5CCT selectable, save inventory</li> <li>• Shatterproof design, lower the breakage rate also safe for shipping</li> </ul> |
| <b>Performance Data</b> | <ul style="list-style-type: none"> <li>• Available in 3000K/3500K/4000K/5000K/6500K, selectable color temperature</li> <li>• Electrical ratings:120-347V</li> <li>• Estimated life of over 100 000hours to L70</li> <li>• 0-10V dimming</li> <li>• Operating temperature: -20°C (-4°F) to 45°C (113°F)</li> </ul>  |
| <b>Compliances</b>      | <ul style="list-style-type: none"> <li>• cULus certified</li> <li>• Meets NSF requirements ( Food Zone (Non-Contact), Splash Zone, and Non-Food Zone )</li> <li>• DLC 5.1 Standard (Under Certification)</li> </ul>  |

### Dimensions & Weights

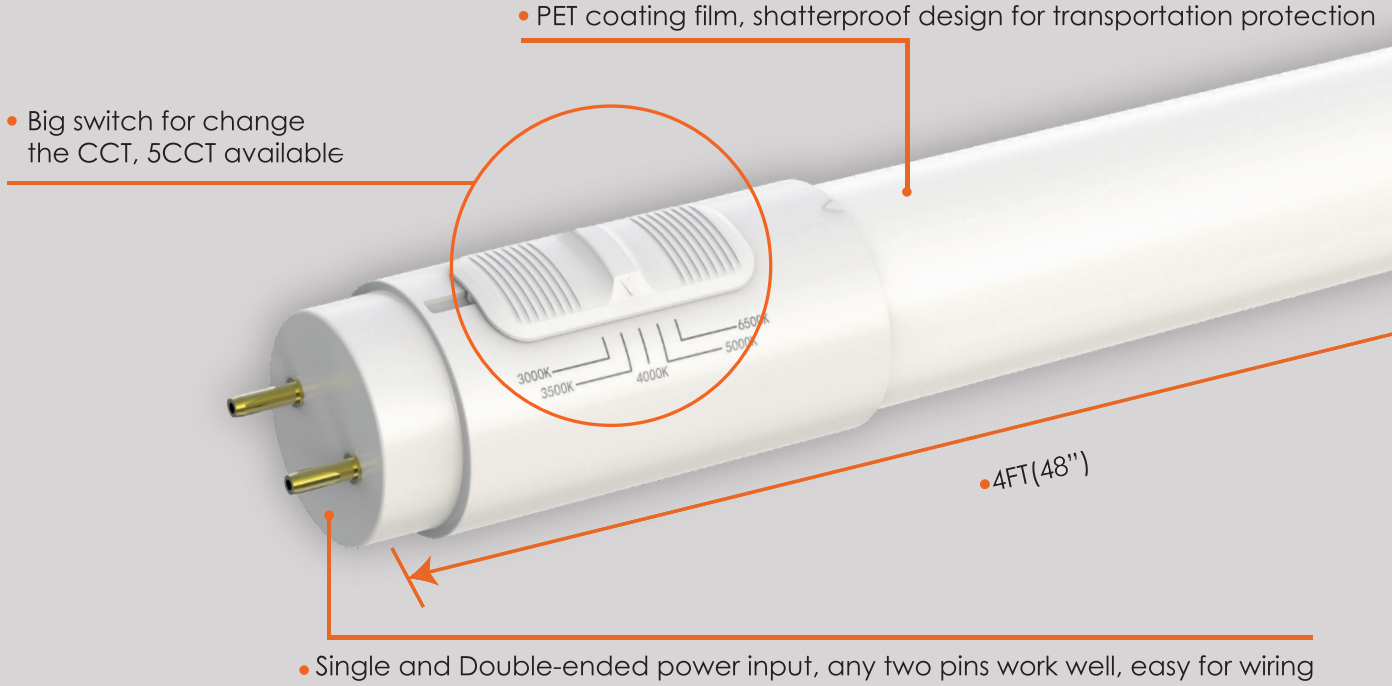


| Model No.           | PV-4FT-18WAB4XS(1600K) |
|---------------------|------------------------|
| Length A in.(mm)    | 47.72 (1212.0)         |
| Length B in.(mm)    | 47.17 (1198.0)         |
| Length C in.(mm)    | 46.5 (1181.0)          |
| Length D in.(mm)    | 1.13 (28.8)            |
| Net weight kg.(lbs) | 0.22 (0.49)            |

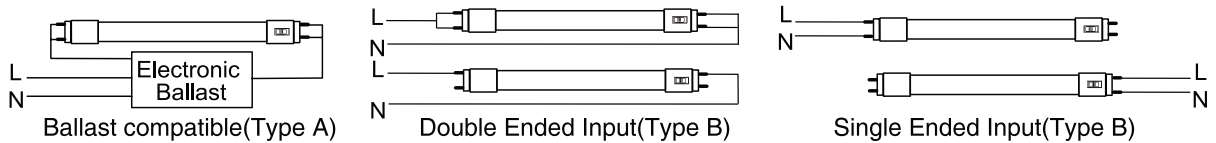




### Product Details

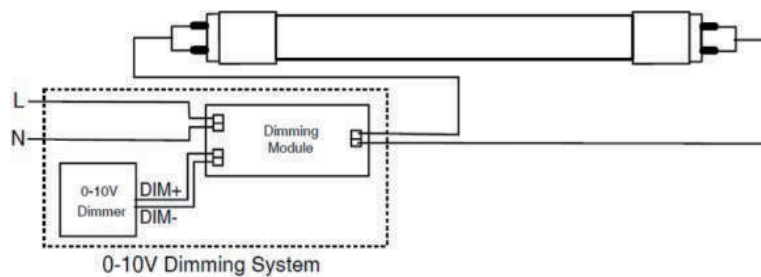


### Wiring Diagram



Voltage Input: AC120-347V 50/60Hz

### Direct AC wiring diagram with 0 - 10V dimming system





Ballast Compatible

- 1. Our tubes can be compatible with the ballasts listed below, if you intend to install ballast compatible tube with ballasts not be listed below, risk of damage or losses may occur. We disclaim liability for any damage or losses by not following the instructions in this document.
2. We are testing more and more ballasts and will update this list all the time. If you do not see your ballast on the list, please contact us.

Y refer to Compatible N refer to Not Compatible N/A refer to Not Applicable

AC120-277V Ballast Compatible List

Table with columns: No., Ballast Brand, Model No., Start Type, and a grid for lamp configurations (1 LAMP, 2 LAMPS, 3 LAMPS, 4 LAMPS) with sub-columns for 120VAC and 277VAC. Rows list various ballast models from PHILIPS ADVANCE and OSRAM.



|     |                      |                        |                                       |   |   |     |     |     |     |     |     |
|-----|----------------------|------------------------|---------------------------------------|---|---|-----|-----|-----|-----|-----|-----|
| 48  | OSRAM                | QHE5 2X32T8/UVN PSN-SC | Step-Switching Programmed Rapid Start | Y | Y | N   | N   | N/A | N/A | N/A | N/A |
| 49  | OSRAM                | QHE 3X32T8/UVN PSN-SC  | Programmed Rapid Start                | Y | Y | Y   | Y   | Y   | Y   | N/A | N/A |
| 50  | OSRAM                | QHE 3X32T8/UVN ISL-SC  | Instant Start                         | Y | Y | Y   | Y   | Y   | Y   | N/A | N/A |
| 51  | OSRAM                | QTP 4X32T8/UVN ISL-SC  | Instant Start                         | Y | Y | Y   | Y   | Y   | Y   | Y   | Y   |
| 52  | OSRAM                | QHE 4X32T8/UVN ISL-SC  | Instant Start                         | Y | Y | Y   | Y   | Y   | Y   | Y   | Y   |
| 53  | OSRAM                | QTP 4X32T8/UVN ISN-SC  | Instant Start                         | Y | Y | Y   | Y   | Y   | Y   | Y   | Y   |
| 54  | OSRAM                | QHE 2X32T8/UVN ISN-SC  | Instant Start                         | Y | Y | Y   | Y   | N/A | N/A | N/A | N/A |
| 55  | Triad                | B4321UNVHP-A           | Instant Start                         | Y | Y | Y   | Y   | Y   | Y   | Y   | Y   |
| 56  | Triad                | B2321UNVHP-N           | Instant Start                         | Y | Y | Y   | Y   | N/A | N/A | N/A | N/A |
| 57  | Triad                | B3321UNVHP-A           | Instant Start                         | Y | Y | Y   | Y   | Y   | Y   | N/A | N/A |
| 58  | Triad                | B4321UNVHE-A           | Instant Start                         | Y | Y | Y   | Y   | Y   | Y   | Y   | Y   |
| 59  | Triad                | B432PUNVHE-A           | Instant Start                         | Y | Y | Y   | Y   | Y   | Y   | Y   | Y   |
| 60  | Triad                | B3321UNVEL-A           | Instant Start                         | Y | Y | Y   | Y   | Y   | Y   | N/A | N/A |
| 61  | Triad                | B2321UNVEL-N           | Instant Start                         | Y | Y | Y   | Y   | N/A | N/A | N/A | N/A |
| 62  | Triad                | B2321UNVHEH-A          | Instant Start                         | N | N | Y   | Y   | N/A | N/A | N/A | N/A |
| 63  | Triad                | B3321UNVHE-A           | Instant Start                         | Y | Y | Y   | Y   | Y   | Y   | N/A | N/A |
| 64  | Triad                | B232PUNVHE-B           | Instant Start                         | Y | Y | Y   | Y   | N/A | N/A | N/A | N/A |
| 65  | HI HOWARD INDUSTRIES | EPL3/32IS/MV/SC/HE     | Instant Start                         | Y | Y | Y   | Y   | Y   | Y   | N/A | N/A |
| 66  | HI HOWARD INDUSTRIES | EPH4/32IS/MV/SC        | Instant Start                         | N | N | N   | N   | N   | N   | Y   | Y   |
| 67  | HI HOWARD INDUSTRIES | EPL2/32IS/MV/MC/HE     | Instant Start                         | Y | Y | Y   | Y   | N/A | N/A | N/A | N/A |
| 68  | HI HOWARD INDUSTRIES | EP2/32IS/MV/MC/HE      | Instant Start                         | Y | Y | Y   | Y   | N/A | N/A | N/A | N/A |
| 69  | HI HOWARD INDUSTRIES | EP4/32IS/MV/MC/HE      | Instant Start                         | Y | Y | Y   | Y   | Y   | Y   | Y   | Y   |
| 70  | HI HOWARD INDUSTRIES | EPL4/32IS/MV/MC/HE     | Instant Start                         | Y | Y | Y   | Y   | Y   | Y   | Y   | Y   |
| 71  | GE                   | GE132MAX-H/ULtra       | Instant Start                         | Y | Y | N/A | N/A | N/A | N/A | N/A | N/A |
| 72  | GE                   | GE132MAXP-L/ULTRA      | Instant Start                         | Y | Y | N/A | N/A | N/A | N/A | N/A | N/A |
| 73  | GE                   | GE-132-MV-PS-L         | Programmed Start                      | Y | Y | N/A | N/A | N/A | N/A | N/A | N/A |
| 74  | GE                   | GE-132-MV-N            | Instant Start                         | Y | Y | N/A | N/A | N/A | N/A | N/A | N/A |
| 75  | GE                   | GE132MAXP-N/ULTRA      | Instant Start                         | Y | Y | N/A | N/A | N/A | N/A | N/A | N/A |
| 76  | GE                   | GE132-MVPS-H           | Programmed Start                      | Y | Y | N/A | N/A | N/A | N/A | N/A | N/A |
| 77  | GE                   | GE132MAX-G-N           | Instant Start                         | Y | Y | N/A | N/A | N/A | N/A | N/A | N/A |
| 78  | GE                   | GE232MAXP-H/ULTRA      | Instant Start                         | N | N | Y   | Y   | N/A | N/A | N/A | N/A |
| 79  | GE                   | GE232-MV-PS-H          | Instant Start                         | N | N | Y   | Y   | N/A | N/A | N/A | N/A |
| 80  | GE                   | GE232MAX-L/ULTRA       | Instant Start                         | Y | Y | Y   | Y   | N/A | N/A | N/A | N/A |
| 81  | GE                   | GE232-MVPS-L           | Programmed Start                      | Y | Y | Y   | Y   | N/A | N/A | N/A | N/A |
| 82  | GE                   | GE232-MVPS-N           | Programmed Start                      | Y | Y | Y   | Y   | N/A | N/A | N/A | N/A |
| 83  | GE                   | GE232MAX-G-N           | Instant Start                         | Y | Y | Y   | Y   | N/A | N/A | N/A | N/A |
| 84  | GE                   | GE-232-MVPS-XL         | Programmed Start                      | Y | Y | Y   | Y   | N/A | N/A | N/A | N/A |
| 85  | GE                   | GE232MAX-G-N-DIYB      | Instant Start                         | Y | Y | Y   | Y   | N/A | N/A | N/A | N/A |
| 86  | GE                   | GE-232-MV-N            | Instant Start                         | Y | Y | Y   | Y   | N/A | N/A | N/A | N/A |
| 87  | GE                   | GE-232-MV-PS-H         | Programmed Start                      | N | N | Y   | Y   | N/A | N/A | N/A | N/A |
| 88  | GE                   | GE232MAXG-N-DIYL       | Instant Start                         | Y | Y | Y   | Y   | N/A | N/A | N/A | N/A |
| 89  | GE                   | GE232MAXP-L/ULTRA      | Instant Start                         | Y | Y | Y   | Y   | N/A | N/A | N/A | N/A |
| 90  | GE                   | GE-232-MV-PS-N         | Instant Start                         | Y | Y | Y   | Y   | N/A | N/A | N/A | N/A |
| 91  | GE                   | GE332MAXP-H-42T        | Instant Start                         | N | N | N   | N   | N   | Y   | N/A | N/A |
| 92  | GE                   | GE-332-MVPS-XL         | Program Start                         | Y | Y | Y   | Y   | Y   | Y   | N/A | N/A |
| 93  | GE                   | GE332MAX-G-N           | Instant Start                         | Y | Y | Y   | Y   | Y   | Y   | N/A | N/A |
| 94  | GE                   | GE332-MVPS-L           | Programmed Start                      | Y | Y | Y   | Y   | Y   | Y   | N/A | N/A |
| 95  | GE                   | GE332MAXP-L/ULTRA      | Instant Start                         | Y | Y | Y   | Y   | Y   | Y   | N/A | N/A |
| 96  | GE                   | GE332MAX-G-H           | Instant Start                         | N | N | N   | N   | Y   | Y   | N/A | N/A |
| 97  | GE                   | GE332MAX-G-N-DIYB      | Instant Start                         | Y | Y | Y   | Y   | Y   | Y   | N/A | N/A |
| 98  | GE                   | GE332MV-N-DIY          | Instant Start                         | Y | Y | Y   | Y   | Y   | Y   | N/A | N/A |
| 99  | GE                   | GE432MAXP-H/ULTRA      | Instant Start                         | N | N | N   | N   | Y   | Y   | Y   | Y   |
| 100 | GE                   | GE432MAXG-N-DIYL       | Instant Start                         | Y | Y | Y   | Y   | Y   | Y   | Y   | Y   |
| 101 | GE                   | GE432MAX-L/ULtra       | Instant Start                         | Y | Y | Y   | Y   | Y   | Y   | Y   | Y   |
| 102 | GE                   | GE432MAX90-V60         | Instant Start                         | N | N | N   | N   | N   | N   | Y   | Y   |
| 103 | GE                   | GE432MAXPH/ULTRA       | Instant Start                         | N | N | N   | N   | Y   | Y   | Y   | Y   |
| 104 | GE                   | GE432MAXP-L/ULTRA      | Instant Start                         | Y | Y | Y   | Y   | Y   | Y   | Y   | Y   |
| 105 | ESPEN                | VE332MVHIPL            | Instant Start                         | Y | Y | Y   | Y   | Y   | Y   | N/A | N/A |
| 106 | ESPEN                | VE2P32MVHPPE 11080     | Programmed Start                      | Y | Y | Y   | Y   | N/A | N/A | N/A | N/A |
| 107 | ESPEN                | VE4P32MVHIPE 11072     | Instant Start                         | N | N | Y   | Y   | Y   | Y   | Y   | Y   |
| 108 | ESPEN                | VE4P32MVHPPE 11086     | Programmed Start                      | Y | Y | Y   | Y   | Y   | Y   | Y   | Y   |
| 109 | ESPEN                | VE3P32MVHIPL 11056     | Instant Start                         | Y | Y | Y   | Y   | Y   | Y   | N/A | N/A |
| 110 | ESPEN                | VE4P32MVHIPL 11057     | Instant Start                         | Y | Y | N   | Y   | Y   | Y   | Y   | Y   |

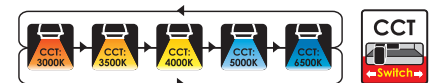


|     |                 |                          |                        |     |   |     |     |     |     |     |     |
|-----|-----------------|--------------------------|------------------------|-----|---|-----|-----|-----|-----|-----|-----|
| 111 | ESPEN           | VE4P32MVHIPHE 11073      | Instant Start          | N   | N | N   | N   | N   | N   | Y   | Y   |
| 112 | ESPEN           | VE232MVHIPLE             | Instant Start          | Y   | Y | Y   | Y   | N/A | N/A | N/A | N/A |
| 113 | ESPEN           | VE3P32MVHPPPE 11083      | Instant Start          | Y   | Y | Y   | Y   | Y   | Y   | N/A | N/A |
| 114 | ESPEN           | VE2P32MVHIPHE 11069      | Instant Start          | N   | N | Y   | Y   | N/A | N/A | N/A | N/A |
| 115 | ESPEN           | VE2P32MVHIPPE 11068      | Instant Start          | Y   | Y | Y   | Y   | N/A | N/A | N/A | N/A |
| 116 | Halco           | EP332IS/L/MV/HE          | Instant Start          | Y   | Y | Y   | Y   | Y   | Y   | N/A | N/A |
| 117 | Halco           | EP432IS/L/MV/HE          | Instant Start          | Y   | Y | Y   | Y   | Y   | Y   | Y   | Y   |
| 118 | Halco           | EP232IS/MV/HE            | Instant Start          | Y   | Y | Y   | Y   | N/A | N/A | N/A | N/A |
| 119 | Halco           | EP332IS/MV/HE            | Instant Start          | Y   | Y | Y   | Y   | Y   | Y   | N/A | N/A |
| 120 | Robertson       | ISL432T8HEMV 3P20160     | Instant Start          | Y   | Y | N   | Y   | N   | Y   | N   | Y   |
| 121 | TCP             | E3P32ISUNVE              | Instant Start          | Y   | Y | Y   | Y   | Y   | Y   | N/A | N/A |
| 122 | TCP             | E4P32ISUNVE              | Instant Start          | Y   | N | N   | N   | Y   | Y   | Y   | Y   |
| 123 | TCP             | E4P32ISUNHE              | Instant Start          | N   | N | N   | N   | N   | N   | Y   | Y   |
| 124 | SYLVANIA        | QTP 1X32T8/UNV DIM-TC    | Dimming Start          | Y   | Y | N/A | N/A | N/A | N/A | N/A | N/A |
| 125 | SYLVANIA        | QHE 1X32T8/UNV ISL-SC    | Instant Start          | Y   | Y | N/A | N/A | N/A | N/A | N/A | N/A |
| 126 | SYLVANIA        | QHE 1X32T8/UNV ISN-SC    | Instant Start          | Y   | Y | N/A | N/A | N/A | N/A | N/A | N/A |
| 127 | SYLVANIA        | QHE 1X32T8/UNV ISH HT SC | Instant Start          | Y   | Y | N/A | N/A | N/A | N/A | N/A | N/A |
| 128 | SYLVANIA        | QTP 2X32T8/UNV DIM-TC    | Dimming Start          | N   | N | Y   | Y   | N/A | N/A | N/A | N/A |
| 129 | SYLVANIA        | QHE 2X32T8/UNV ISH-SC    | N/A                    | N   | N | Y   | Y   | N/A | N/A | N/A | N/A |
| 130 | SYLVANIA        | QTP 2X32T8 UNV ISN-SC    | Instant Start          | Y   | Y | Y   | Y   | N/A | N/A | N/A | N/A |
| 131 | SYLVANIA        | QTP 2X32T8/UNV PSX-TC    | Programmed Rapid Start | N   | N | Y   | Y   | N/A | N/A | N/A | N/A |
| 132 | SYLVANIA        | QTP 3X32T8/UNV PSX-SC    | Programmed Rapid Start | N   | N | N   | N   | Y   | Y   | N/A | N/A |
| 133 | SYLVANIA        | QHE 4X32T8/UNV ISL-SC    | Instant Start          | Y   | Y | Y   | Y   | Y   | Y   | Y   | Y   |
| 134 | SYLVANIA        | QHE 4X32T8/UNV ISN-SC    | Instant Start          | Y   | N | N   | N   | Y   | Y   | Y   | Y   |
| 135 | SYLVANIA        | QHE 4X32T8/UNV PSX-SC    | Programmed Rapid Start | Y   | Y | Y   | Y   | Y   | Y   | Y   | Y   |
| 136 | arcata          | ACT4P32ISUNVE            | Instant Start          | Y   | Y | Y   | Y   | Y   | Y   | Y   | Y   |
| 137 | ACT             | ACT3P32ISUNVE            | Instant Start          | Y   | Y | Y   | Y   | Y   | Y   | N/A | N/A |
| 138 | EIKO            | PM-3X32T8-UNV-IS-H       | Instant Start          | N   | N | N   | N   | N   | Y   | N/A | N/A |
| 139 | EIKO            | PM-3X32T8-UNV-IS         | Instant Start          | Y   | Y | N   | Y   | N   | Y   | N/A | N/A |
| 140 | EIKO            | PM-2X32T8-UNV-IS         | Instant Start          | Y   | Y | Y   | Y   | N/A | N/A | N/A | N/A |
| 141 | OSRAM           | QHE 3X32T8/UNV DIM-TCL   | Programmed Rapid Start | N   | N | N   | N   | Y   | Y   | N/A | N/A |
| 142 | OSRAM           | QHE 4X32T8/UNV DIM-TCL   | Programmed Rapid Start | N   | N | N   | N   | N   | N   | Y   | Y   |
| 143 | PHILIPS ADVANCE | VZT-4332-G               | Programmed Start       | N/A | N | N/A | N   | N/A | Y   | N/A | Y   |
| 144 | SYLVANIA        | QTP 3X32T8/UNV DIM-TCL   | Programmed Rapid Start | N   | N | N   | N   | Y   | Y   | N/A | N/A |
| 145 | Plusrite        | BAF432IS/MV              | Instant Start          | Y   | Y | Y   | Y   | Y   | Y   | Y   | Y   |
| 146 | Plusrite        | BAF232PS/MV              | program Start          | Y   | Y | Y   | Y   | N/A | N/A | N/A | N/A |
| 147 | Sunlife         | 40155-SU-SB/232/MV       | Instant Start          | Y   | Y | Y   | Y   | N/A | N/A | N/A | N/A |
| 148 | Triad           | B232IUNV-C               | Instant Start          | Y   | Y | Y   | Y   | N/A | N/A | N/A | N/A |
| 149 | EIKO            | PM-4X32T8-UNV-IS         | Instant Start          | N   | Y | N   | Y   | N   | Y   | N   | Y   |
| 150 | GE              | GE232MAX-N/ULTRA         | Instant Start          | Y   | Y | Y   | Y   | N/A | N/A | N/A | N/A |
| 151 | GE              | GE232MVPS-N-VO3          | program Start          | Y   | Y | Y   | Y   | N/A | N/A | N/A | N/A |
| 152 | ROBERTSON       | ISS232T8MVW              | Instant Start          | Y   | Y | Y   | Y   | N/A | N/A | N/A | N/A |



AC347V Ballast Compatible List

| No. | Ballast Brand | Model No.             | Start Type    | Compatible (Y/N/N/A) |         |         |         |
|-----|---------------|-----------------------|---------------|----------------------|---------|---------|---------|
|     |               |                       |               | 1 LAMP               | 2 LAMPS | 3 LAMPS | 4 LAMPS |
|     |               |                       |               | 347V AC              | 347V AC | 347V AC | 347V AC |
| 1   | GE            | GE232MAX347-H         | Instant Start | N                    | Y       | N/A     | N/A     |
| 2   | GE            | GE332MAXP347-H        | Instant Start | N                    | N       | Y       | N/A     |
| 3   | GE            | GE432MAXP347-H        | Instant Start | N                    | N       | N       | Y       |
| 4   | GE            | GE432MAXP347-N        | Instant Start | N                    | Y       | Y       | Y       |
| 5   | SYLVANIA      | QHE 2X32T8/347 ISL-SC | Instant Start | Y                    | Y       | N/A     | N/A     |
| 6   | SYLVANIA      | QTP 2X32T8/347 ISN-SC | Instant Start | Y                    | Y       | N/A     | N/A     |
| 7   | arcata        | ACT2P32IS347          | N/A           | Y                    | Y       | N/A     | N/A     |
| 8   | arcata        | ACT4P32IS347          | N/A           | N                    | Y       | Y       | Y       |
| 9   | arcata        | ACT2P32IS347L         | N/A           | Y                    | Y       | N/A     | N/A     |
| 10  | arcata        | ACT4P32IS347L         | N/A           | Y                    | Y       | Y       | Y       |



Data is based upon tests performed in a controlled environment. Actual performance can vary depending on operating conditions. All products are subject to change or may be discontinued any time without notice. Please contact your Votatec customer service representative to confirm inventory levels at time of order

