

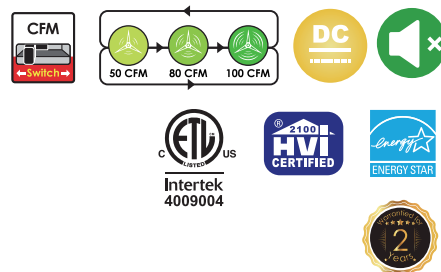
Project : _____

Type : _____

Drawn by : _____

Catalogue No. : _____

Date : _____



Specifications

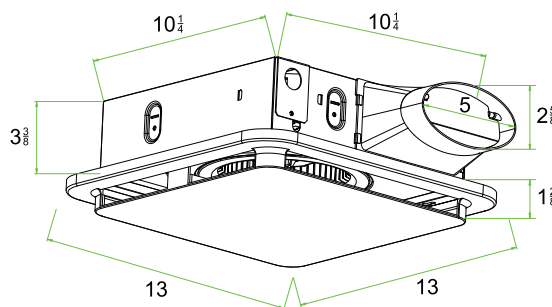
Model No.		<input type="checkbox"/> VO-FN4W14-DC-3SPD
General	Volts	AC 120V/60Hz
	Watts	6W/9W/14W
	Amps(Current)	0.07A/0.13A/0.18A
	Life Span	5000 hours
	Static Pressure in inches w.g.	0.1
	Air Volume	50/80/100 CFM
	Speed	/
	Noise	0.3/0.7/1.1 Sones
	Continuously Run	Yes
Electrical	Motor Type	DC Motor
	Type of Motor Bearing	Ball Bearing
	Power Factor	<1
	Operation Position	Horizontal
	Thermal Fuse Protection	Yes
	Temperature Rise	< 70K
	Capacity	/
	Power Cord	cUL Listed 18AWG Power Cord
Physical	Housing Dimension	10-1/4x10-1/4x3-3/8inch
	Grille Dimension	13x13inch
	Duct Dimension	4 inch oval
	Housing Material	0.5mm Galvanized Steel Original / Silver Finish
	Grille Material	ABS Plastic
	Wheel Impeller Material	PP+10%GF
Compliance	Safety Listing	cETL-Listed
	Energy Star	Yes
	HVI	Yes

Features & Specifications

Construction	<ul style="list-style-type: none"> • Continuously Running Fan • Galvanized-steel housing protects from moisture erosion for long term. • The wheel impeller made of flame retardant polypropylene reduce damage and risk of fire accident. • Elegant grille design compliments any décor; built-in damper reduces back drafting • Thermal Fuse effectively protects from risking electric leaking. • Dual ball bearing motor made of high-quality stainless steel ensure smooth rotation and reduce friction.
Mounting	<ul style="list-style-type: none"> • Ceiling mount. Mounting foldable ears and hanger bars assist for new construction and retrofit.
Performance Data	<ul style="list-style-type: none"> • 50/80/100 CFM, Powerful ventilation to remove moisture and reduce the risk of mold or mildew in most full baths • 0.3/0. /1.1 Sones for whisper quiet operation • 6/9/14 watt for energy saving.
Compliances	<ul style="list-style-type: none"> • cETL listed for use in insulated ceilings(type I.C.). cETL listed for use over bathtubs or showers when connected to GFCI-protected branch. • ENERGY STAR ® certified for energy efficiency & savings • HVI Certified

Dimensions & Weights

Model	VO-FN4W14-DC-3SPD
Housing Diameter in.(cm)	10 1/4"x10 1/4"x3 3/8" (26 x 26 x 8.5 cm)
Grille Diameter in.(cm)	13" x 13" (33 x 33 cm)
Net weight kgs(lbs)	3.16 kgs (6.97 lbs)



Product Details

- FR-PP plastic wheel impeller

- 4 in. duct connector with damper

- Junction box with live wire, neutral wire and ground wire included

- Air volume control knob

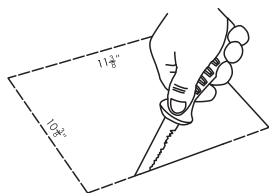
- 0.8mm thickness hanger bars

- 0.6mm thickness galvanized steel housing

- ABS plastic grille

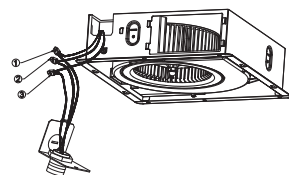
Simple installation manual drawing

a.



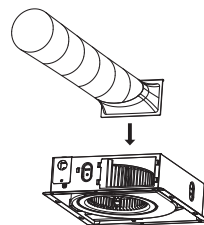
Measure and cut the ceiling opening

b.



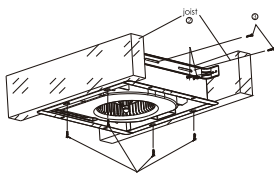
Connect the house and fan wires

c.



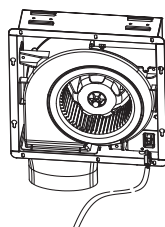
Attach the duct

d.



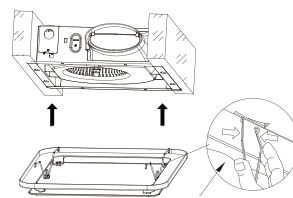
Mount the fan housing

e.



Plug fan in the power

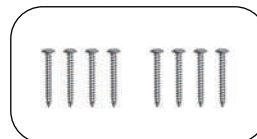
f.



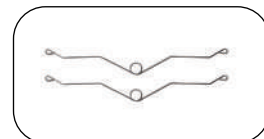
Install the panel

Accessories (packed within box)

Order Code	Compatible with	Order Option
Hanger Bar	VO-FN4W14-DC-3SPD	Included
Screw ST4X30		Included
Mounting Spring		Included
4 inch Connector		Included
4 inch Oval Duct		Included
Damper		Included



Screw ST4X30



Mounting Spring



Hanger Bar



4 inch Connector
Damper



4 inch Oval Duct

