



Innovation & Quality

www.votatec.ca

## LED Canopy Light

### INSTRUCTION MANUAL

Please read the user manual carefully and follow it. This will help to prevent damage of the product, prolong its lifespan;And it will be helpful for your normal use and maintenance, to ensure that your life safety. Please keep the manual properly.

Part No.	Input Voltage	Frequency	Power	Rated Current(max)
VO-RCPW80-347-3WAY-S	AC120-347V	50/60Hz	60W/70W/80W	0.733A

### WARNINGS

THE LED CANOPY LIGHT MUST BE INSTALLED IN ACCORDANCE WITH ALL APPLICABLE ELECTRICAL CODES BY PERSONS FAMILIAR WITH THE INSTALLATION, OPERATION, AND/OR MAINTENANCE OF THE PRODUCTS AND THE HAZARDS INVOLVED. THE LED CANOPY LIGHT MUST BE INSTALLED WITH UL LISTED LIQUID-TIGHT CONDUIT FITTINGS.

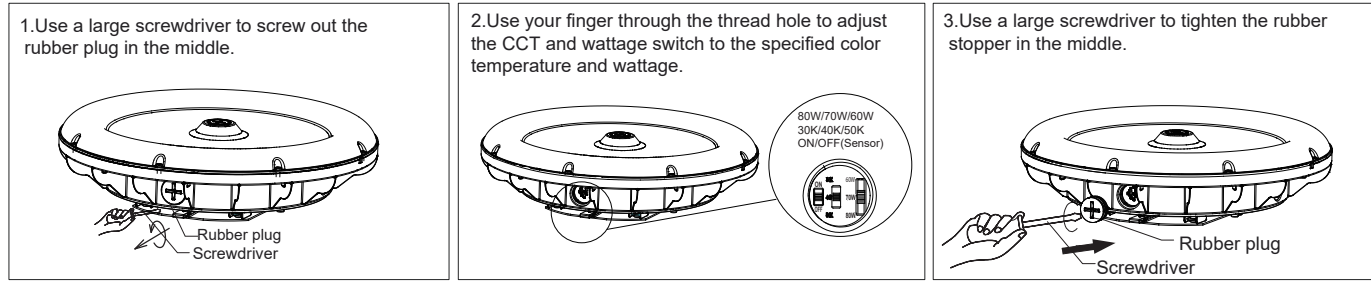
1. Risk of fire or electric shock.
  - 1-1 Make sure the working voltage of LED canopy light is under its rated voltage.
  - 1-2 Make sure the accessories and wires are completed and intact during the installation.
  - 1-3 Installation requires knowledge of electrical systems. For install by qualified electrician only.
    - Do not attempt installation if not qualified.
  - 1-4. This fixture should only be installed in place of existing luminaries that have the construction features and dimensions specified in this manual.
2. Do not expose any wire to edge of sheet metal and/or other sharp objects that may cause damage or abrasion.
3. Do not change existing open holes or create any additional open holes in the fixture or its components during installation.

### CAUTIONS

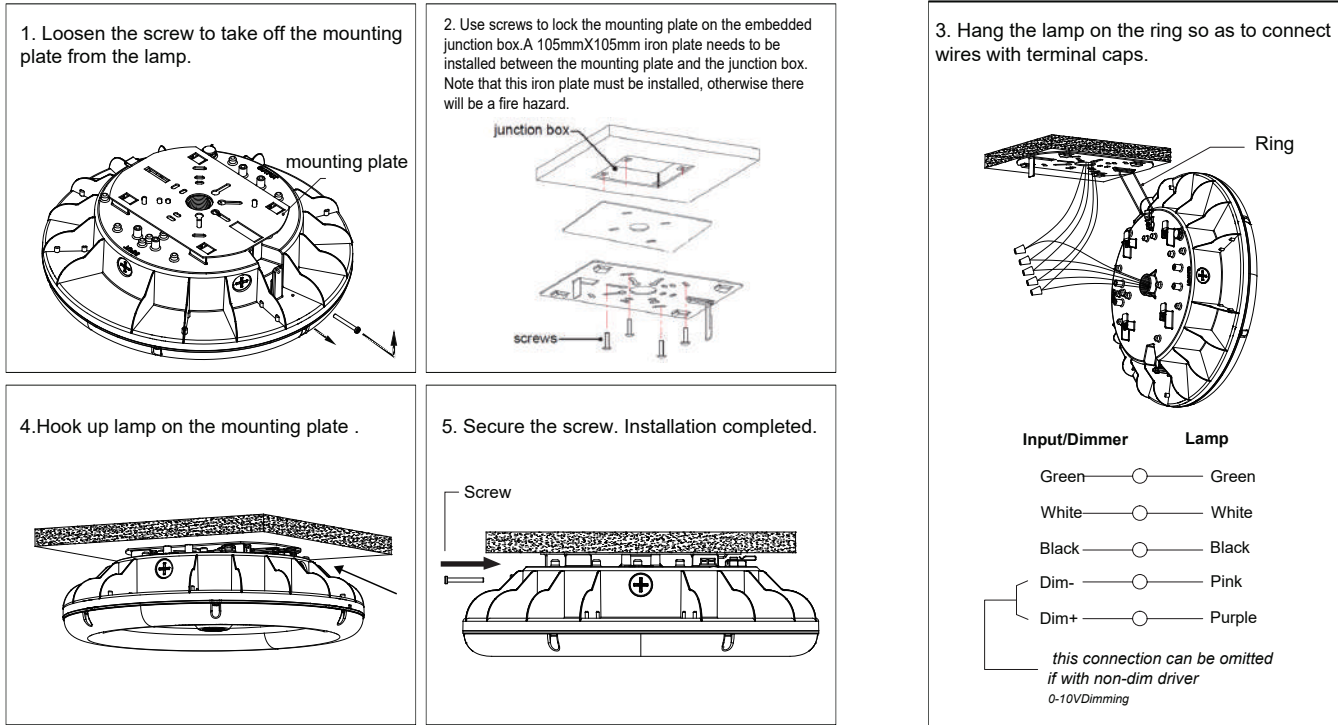
1. Be certain electrical power is OFF before and during installation and maintenance.
2. To prevent wiring damage or abrasion, do not expose wiring to edges of sheet metal or other sharp objects.
3. Do not use the LED Canopy Light near heating appliances/ elements.
4. The input voltage and lamps should be matched after connecting the power line, please make sure the wiring section is insulated.
- 5.LED Canopy Light must be operated within anambient temperature range of -30 C (-22°F) and 40 C (104°F).
- 6.LED Canopy Light is not intended for use with emergency exits.

### Installation Instruction

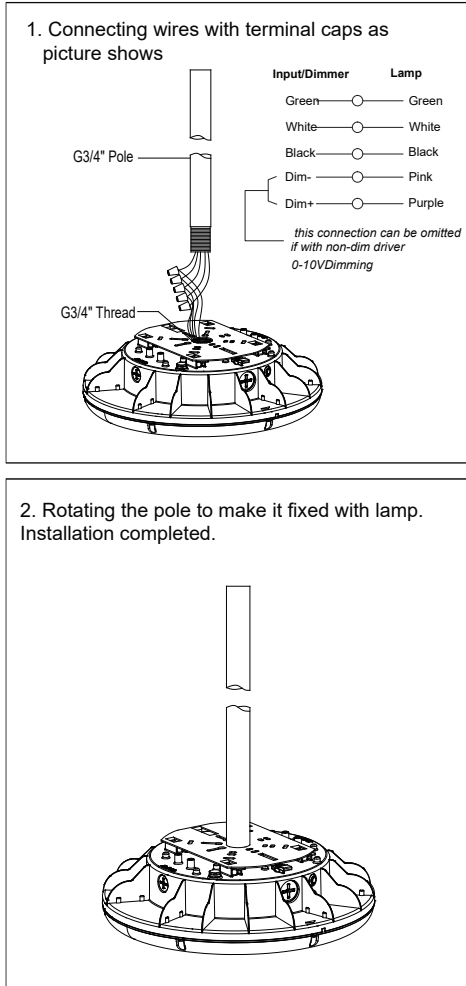
#### CCT & WATTAGE SELECTABLE INSTRUCTION



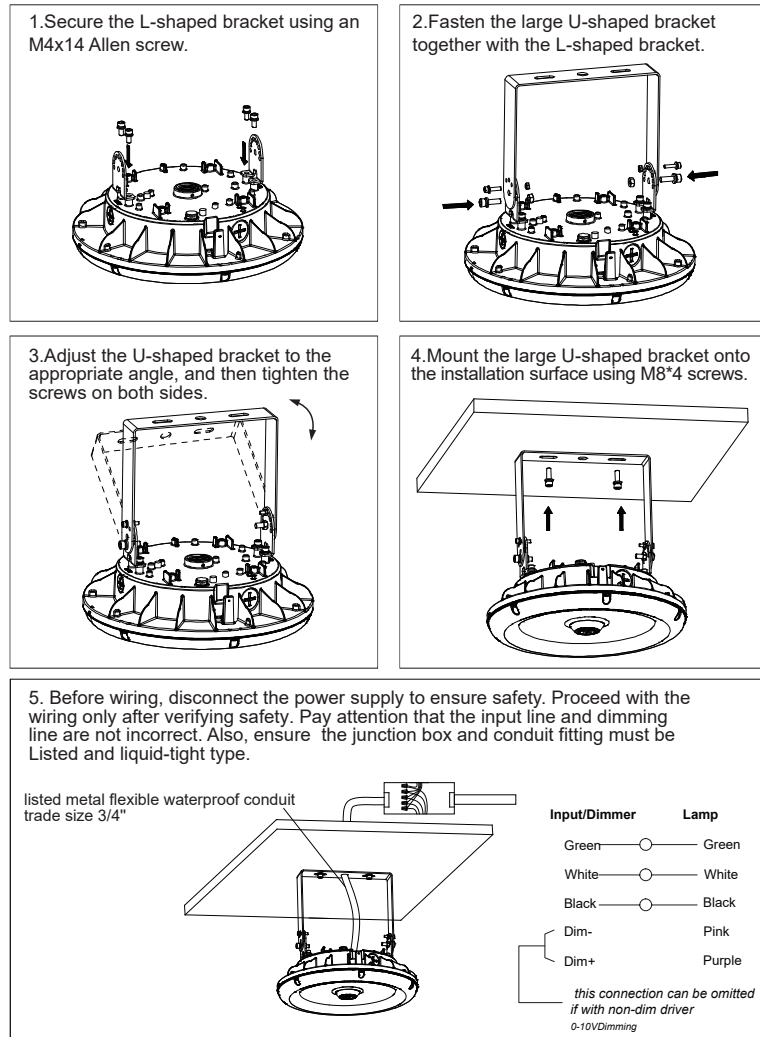
### Installation method I : Ceiling Installation



### Installation method II: Pole-pendent Installation



### Installation method III: Mounting Bracket



The Installation must be carried out by a qualified electrician.

### SENSOR INTRODUCTION

The ANT-6-4T-KN mounts in an outdoor lighting fixture and provides multi-level control based on motion. It controls 0-10 VDC LED drivers or dimming ballasts, and is rated for wet and cold locations. All control parameters are adjustable via knobs or by remote control.

### SPECIFICATIONS

Power supply	12-24VDC, >30mA
Dim control output	0-10V, max. 25mA sinking current
Detection radius	1-8m
Mounting height	Max 40ft. (12meters)
Hold time	3min/5min/10min/15min
Temperature	-4°F ~ +140°F (-20°C ~ +60°C)
IP rating	IP65

#### WARNING

**NOTE:** Warm up time is 40seconds. After the sensor connects input power first time, the light will keep on 40seconds,then go to dimming to work normally.

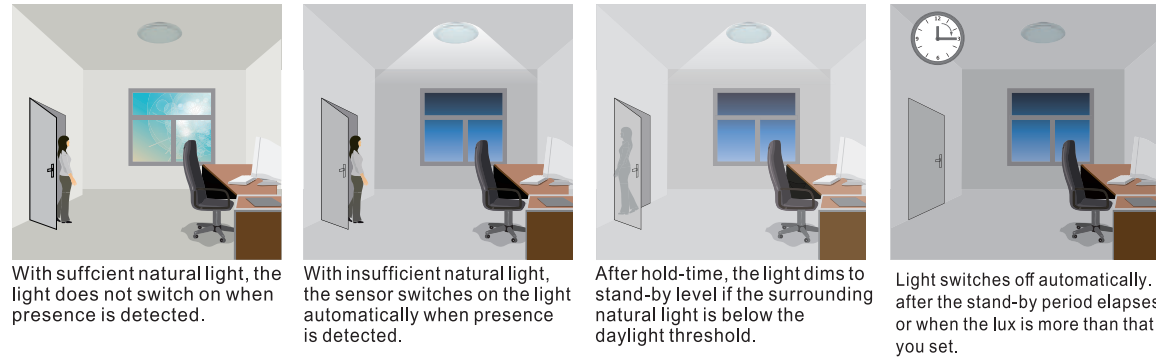
**NOTE:** Factory Default Setting: Hold time is "3min", Daylight is "Disable", Stand-by DIM is "25%", Stand-by time is "30min".

**NOTE:** Any setting changed by knobs or by Remote Control.

**NOTE:** Do not insert or remove the sensor when the Fixture is powered on.

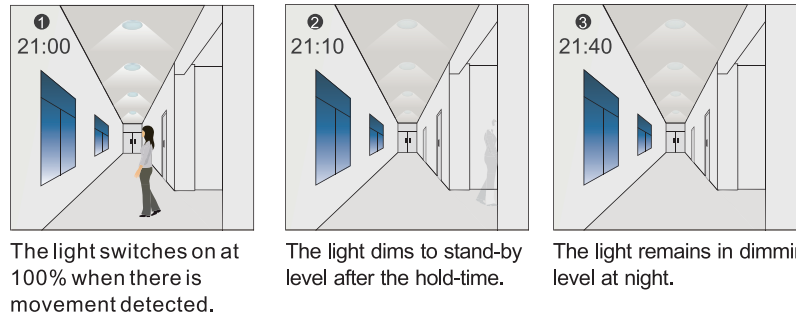
### Corridor Function

This function inside the motion sensor to achieve tri-level control, for some areas which require a light change notice before switch-off. The sensor offers 3 levels of light: 100%-->dimmed light (natural light is insufficient) -->off; and 2 periods of selectable waiting time: motion hold-time and stand-by period; Selectable daylight threshold and freedom of detection area.



### Smart Photocell mode

When choose Stand-by time choose +∞ by knob,or when you use remote control to push Ⓜ when remote control is in setting condition.



Settings on this demonstration:  
Hold-time: 10min  
Setpoint on: 50lux  
Setpoint off: 500lux  
Stand-by Dim: 10%  
Stand-by period: +∞  
(when the smart photocell sensor open, the stand-by time is only +∞)

### OPERATION

- ① Hold time: Hold time (Time from light trigger until no motion is detected) Set time duration until sensor triggers standby light level (3 minutes /5 minutes/10 minutes/15 minutes).
- ② Daylight: to select the current surrounding lux value as the daylight threshold (10lux,30lux,50lux,disable) when corridor function, and when smart photocell mode, the daylight thresholds is 10lux/100lux,30lux/300lux, 50lux/500lux for on/off automatically.
- ③ Stand-by DIM: Set standby dimming level to 0/25%/50%/75% of full light output. Setting the "Stand-by DIM" at 0% means light full off during vacancy.
- ④ Stand-by time: To represents the time that the sensor will keep the light at low dim level after the "Hold time" elapsed. Set Standby time level to 1 minute/30 minutes/60 minutes/+∞ .

**Note:** When stand-by time choose +∞ , the fixture will come into smart photocell mode. And it will turn on and off automatically according to the daylight you set.

### SENSOR COVERAGE

