

Project : _____
 Type : _____
 Drawn by : _____
 Catalogue No. : _____
 Date : _____



Specifications

Model No.		<input type="checkbox"/> PV-4FT-18WAB3M(4000K)	<input type="checkbox"/> PV-4FT-18WAB3M(5000K)
General	Size	4'	4'
	Watts	18W	18W
	Target Lamp	32W	32W
	Lumen	2300LM	2300LM
	Base	G13	G13
	CCT	4000K	5000K
	Volts	AC120-277V	AC120-277V
	CRI	>83	>83
	Beam Angle	200°	200°
	Hours Rated	50,000 hours	50,000 hours
	Max Compartment Size	Length: 47.73in. Width: 1in	Length: 47.73in. Width: 1in
	Ballasting Requirements	Ballast Compatible and Ballast Bypass	Ballast Compatible and Ballast Bypass
Electrical	Operating Frequency	50-60Hz	50-60Hz
	Power Factor	>0.9	>0.9
	Wiring	Any 2 pins connected	Any 2 pins connected
	Surge Protection	Ring Wave Surge 2.5KV	Ring Wave Surge 2.5KV
	Operating Temperature	-20°C(-4°F) TO 45°C(113°F)	-20°C(-4°F) TO 45°C(113°F)
Physical	Housing Material	Glass with PET Coating	Glass with PET Coating
	Housing Color	Milky	Milky
	Net Weight (Kg)	0.21	0.21
Additional Information	Additional Info	N/A	N/A
	Warranty	5 years	5 years
Compliance	Safety Listing	cULus	cULus
	Location Rating	Dry	Dry
	DLC Approved	Yes, DLC 5.1 Standard	Yes, DLC 5.1 Standard
	DLC ID	PW7Q5WKR	PG9R4HMG

Features & Specifications

Construction

- Type A+B, work with ballast or AC120-277V direct power input, provides easy installation
- High Compatibility: Work with 130+electronic ballasts, including emergency&dimming ballasts
- Single and double-ended, any two pins connect works
- Shatterproof design, lower the breakage rate also safe for shipping

Performance Data

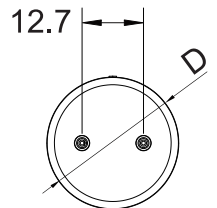
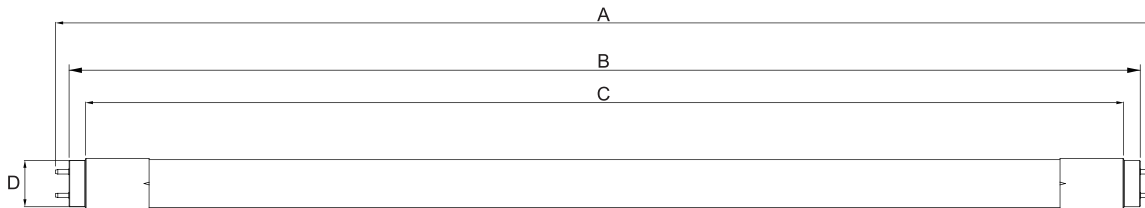
- 83+ CRI
- Estimated life of over 50 000hours to L70
- 0-10V dimming
- Operating temperature:-20°C(-4°F) to 45°C(113°F)

Compliances

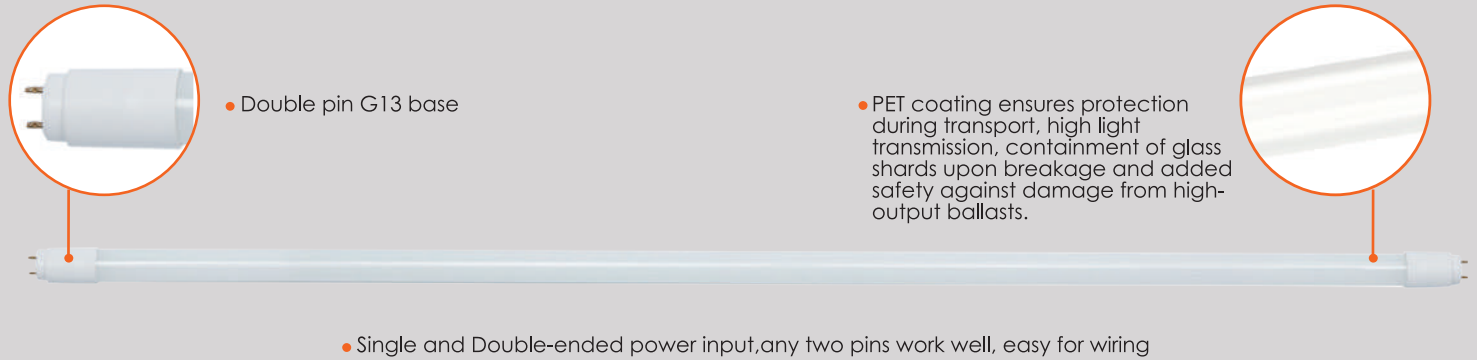
- cULus certified
- Meets NSF requirements (Splash Zone and Non Food Zone)
- DLC 5.1 Standard

Dimensions & Weights

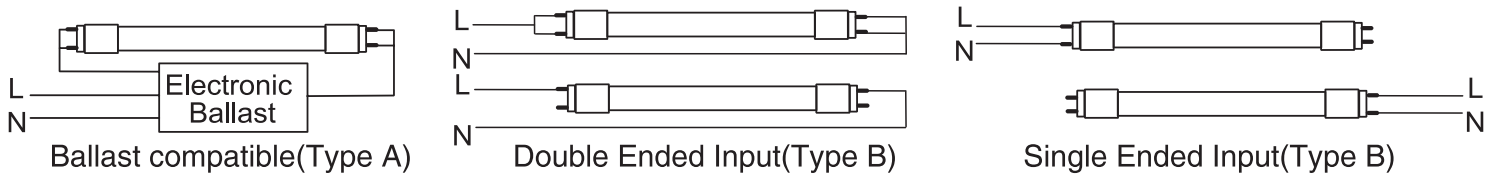
Model No.	PV-4FT-18WAB3M(4000K) PV-4FT-18WAB3M(5000K)
Length A in.(mm)	47.73"(1212.4)
Length B in.(mm)	47.17"(1198.2)
Length C in.(mm)	46.47"(1180.4)
Length D in.(mm)	1"(25.4)
Net weight kg.(lbs)	0.21"(0.46)



Product Details

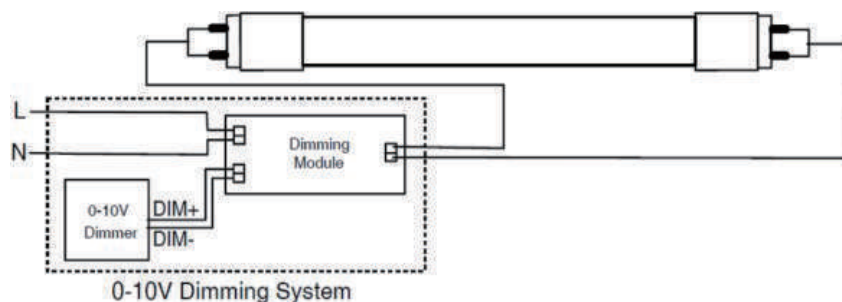


Wiring Diagram



Voltage Input: AC120-277V 50/60Hz

Direct AC wiring diagram with 0-10V dimming system



94	GE	GE332MAX-G-H	Instant Start	N	N	N	N	Y	Y	N/A	N/A
95	GE	GE332MAX-G-N-DIYB	Instant Start	Y	Y	Y	Y	Y	Y	N/A	N/A
96	GE	GE332MV-N-DIY	Instant Start	Y	Y	Y	Y	Y	Y	N/A	N/A
97	GE	GE432MAXP-H/ULTRA	Instant Start	N	N	N	N	Y	Y	Y	Y
98	GE	GE432MAXG-N-DIYL	Instant Start	Y	Y	Y	Y	Y	Y	Y	Y
99	GE	GE432MAX-L/ULtra	Instant Start	Y	Y	Y	Y	Y	Y	Y	Y
100	GE	GE432MAX90-V60	Instant Start	N	N	N	N	N	N	Y	Y
101	GE	GE432MAXPH/ULTRA	Instant Start	N	N	N	N	Y	Y	Y	Y
102	GE	GE432MAXP-L/ULTRA	Instant Start	Y	Y	Y	Y	Y	Y	Y	Y
103	ESPEN	VE332MVHIPLE	Instant Start	Y	Y	Y	Y	Y	Y	N/A	N/A
104	ESPEN	VE2P32MVHPPE 11080	Programmed Start	Y	Y	Y	Y	N/A	N/A	N/A	N/A
105	ESPEN	VE4P32MVHIPLE 11072	Instant Start	N	N	Y	Y	Y	Y	Y	Y
106	ESPEN	VE4P32MVHPPE 11086	Programmed Start	Y	Y	Y	Y	Y	Y	Y	Y
107	ESPEN	VE3P32MVHIPLE 11056	Instant Start	Y	Y	Y	Y	Y	Y	N/A	N/A
108	ESPEN	VE4P32MVHIPLE 11057	Instant Start	Y	Y	N	Y	Y	Y	Y	Y
109	ESPEN	VE4P32MVHPHE 11073	Instant Start	N	N	N	N	N	N	Y	Y
110	ESPEN	VE232MVHIPLE	Instant Start	Y	Y	Y	Y	N/A	N/A	N/A	N/A
111	ESPEN	VE3P32MVHPPE 11083	Instant Start	Y	Y	Y	Y	Y	Y	N/A	N/A
112	ESPEN	VE2P32MVHPHE 11069	Instant Start	N	N	Y	Y	N/A	N/A	N/A	N/A
113	ESPEN	VE2P32MVHIPLE 11068	Instant Start	Y	Y	Y	Y	N/A	N/A	N/A	N/A
114	Halco	EP332IS/L/MV/HE	Instant Start	Y	Y	Y	Y	Y	Y	N/A	N/A
115	Halco	EP432IS/L/MV/HE	Instant Start	Y	Y	Y	Y	Y	Y	Y	Y
116	Halco	EP232IS/MV/HE	Instant Start	Y	Y	Y	Y	N/A	N/A	N/A	N/A
117	Halco	EP332IS/MV/HE	Instant Start	Y	Y	Y	Y	Y	Y	N/A	N/A
118	Robertson	ISL432T8HEMV 3P201.60	Instant Start	Y	Y	N	Y	N	Y	N	Y
119	TCP	E3P32ISUNVE	Instant Start	Y	Y	Y	Y	Y	Y	N/A	N/A
120	TCP	E4P32ISUNVE	Instant Start	Y	N	N	N	Y	Y	Y	Y
121	TCP	E4P32ISUNHE	Instant Start	N	N	N	N	N	N	Y	Y
122	SYLVANIA	QTP 1X32T8/UNV DIM-TC	Dimming Start	Y	Y	N/A	N/A	N/A	N/A	N/A	N/A
123	SYLVANIA	QHE 1X32T8/UNV ISL-SC	Instant Start	Y	Y	N/A	N/A	N/A	N/A	N/A	N/A
124	SYLVANIA	QHE 1X32T8/UNV ISN-SC	Instant Start	Y	Y	N/A	N/A	N/A	N/A	N/A	N/A
125	SYLVANIA	QHE 1X32T8/UNV ISH HT-SC	Instant Start	Y	Y	N/A	N/A	N/A	N/A	N/A	N/A
126	SYLVANIA	QTP 2X32T8/UNV DIM-TC	Dimming Start	N	N	Y	Y	N/A	N/A	N/A	N/A
127	SYLVANIA	QHE 2X32T8/UNV ISH-SC	N/A	N	N	Y	Y	N/A	N/A	N/A	N/A
128	SYLVANIA	QTP 2X32T8 UNV ISN-SC	Instant Start	Y	Y	Y	Y	N/A	N/A	N/A	N/A
129	SYLVANIA	QTP 2X32T8/UNV PSX-TC	Programmed Rapid Start	N	N	Y	Y	N/A	N/A	N/A	N/A
130	SYLVANIA	QTP 3X32T8/UNV PSX-SC	Programmed Rapid Start	N	N	N	N	Y	Y	N/A	N/A
131	SYLVANIA	QHE 4X32T8/UNV ISN-SC	Instant Start	Y	N	N	N	Y	Y	Y	Y
132	SYLVANIA	QHE 4X32T8/UNV PSX-SC	Programmed Rapid Start	Y	Y	Y	Y	Y	Y	Y	Y
133	arcata	ACT14P32ISUNVE	Instant Start	Y	Y	Y	Y	Y	Y	Y	Y
134	ACT	ACT13P32ISUNVE	Instant Start	Y	Y	Y	Y	Y	Y	N/A	N/A
135	EIKO	PM-3X32T8-UNV-IS-H	Instant Start	N	N	N	N	N	Y	N/A	N/A
136	EIKO	PM-3X32T8-UNV-IS	Instant Start	Y	Y	N	Y	N	Y	N/A	N/A
137	EIKO	PM-2X32T8-UNV-IS	Instant Start	Y	Y	Y	Y	N/A	N/A	N/A	N/A
138	OSRAM	QHE 3X32T8/UNV DIM-TCL	Programmed Rapid Start	N	N	N	N	Y	Y	N/A	N/A
139	OSRAM	QHE 4X32T8/UNV DIM-TCL	Programmed Rapid Start	N	N	N	N	N	N	Y	Y
140	PHILIPS ADVANCE	VZT-4S32-G	Programmed Start	N/A	N	N/A	N	N/A	Y	N/A	Y
141	SYLVANIA	QTP 3X32T8/UNV DIM-TCL	Programmed Rapid Start	N	N	N	N	Y	Y	N/A	N/A
142	Plusrite	BAF432IS/MV	Instant Start	Y	Y	Y	Y	Y	Y	Y	Y
143	Plusrite	BAF232PS/MV	program Start	Y	Y	Y	Y	N/A	N/A	N/A	N/A
144	Sunlite	40155-SU 5B/232/MV	Instant Start	Y	Y	Y	Y	N/A	N/A	N/A	N/A
145	Triad	B2321UNV-C	Instant Start	Y	Y	Y	Y	N/A	N/A	N/A	N/A
	EIKO	PM-4X32T8-UNV-IS	Instant Start	N	Y	N	Y	N	Y	N	Y
147	GE	GE232MAX-N/ULTRA	Instant Start	Y	Y	Y	Y	N/A	N/A	N/A	N/A
148	GE	GE232MVPS-N-VO3	program Start	Y	Y	Y	Y	N/A	N/A	N/A	N/A
149	ROBERTSON	ISS232T8MVV	Instant Start	Y	Y	Y	Y	N/A	N/A	N/A	N/A

AC 37V Ballast Compatible List

No.	Ballast Brand	Model No.	Start Type	Compatible (Y/N/N/A)			
				1 LAMP	2 LAMPS	3 LAMPS	4 LAMPS
				347VAC	347VAC	347VAC	347VAC
1	GE	GE232MAX347-H	Instant Start	N	Y	N/A	N/A
2	GE	GE332MAXP347-H	Instant Start	N	N	Y	N/A
3	GE	GE432MAXP347-H	Instant Start	N	N	N	Y
4	GE	GE432MAXP347-N	Instant Start	N	Y	Y	Y
5	SYLVANIA	QHE 2X32T8/347 ISL-S	Instant Start	Y	Y	N/A	N/A
6	SYLVANIA	QTP 2X32T8/347 ISN-S	Instant Start	Y	Y	N/A	N/A
7	arcata	ACT2P32IS347	N/A	Y	Y	N/A	N/A
8	arcata	ACT4P32IS347	N/A	N	Y	Y	Y
9	arcata	ACT2P32IS347L	N/A	Y	Y	N/A	N/A
10	arcata	ACT4P32IS347L	N/A	Y	Y	Y	Y



Data is based upon tests performed in a controlled environment. Actual performance can vary depending on operating conditions. All products are subject to change or may be discontinued any time without notice. Please contact your Votatec customer service representative to confirm inventory levels at time of order

