

Project : \_\_\_\_\_  
 Type : \_\_\_\_\_  
 Drawn by : \_\_\_\_\_  
 Catalogue No. : \_\_\_\_\_  
 Date : \_\_\_\_\_



## Specifications

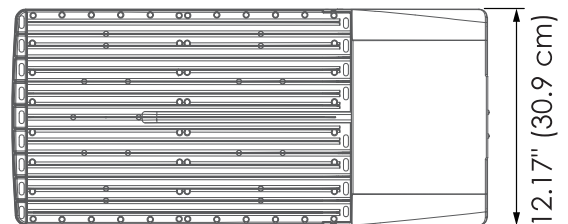
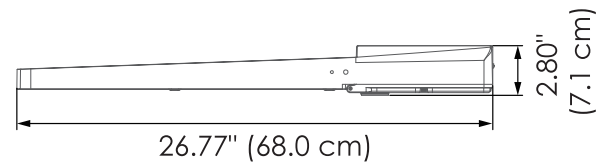
| Model No.              |                            | □ HD-SB05A-300WD-G-T3050-MSP                 |
|------------------------|----------------------------|--|
| General                | Watts                      | 300-240-200W                                 |
|                        | Lumen                      | 45,000Lm                                     |
|                        | CCT Selectable             | 3000K-4000K-5000K                            |
|                        | Volts                      | AC 120-347V                                  |
|                        | CRI                        | Ra≥80  |
|                        | Beam Angle                 | T5/T4/T3                                     |
|                        | Hours Rated                | 50,000H (L70B50 @35°C)                       |
|                        | Light Efficiency           | 150Lm/W                                      |
|                        | SDCM                       | <7   |
| Electrical             | Operating Frequency        | 50-60Hz                                      |
|                        | Power Factor               | ≥0.90  |
|                        | Surge Protection           | 10KV   |
|                        | Operating Temperature      | -30°C~+50°C @Outdoor / -22°F~+122°F @Outdoor |
| Physical               | Lens Material              | PC   |
|                        | Housing Color              | Bronze                                       |
|                        | Weight (kg)                | 2.25kg±0.5                                   |
| Additional Information | Additional Info            | CCT+Power+Beam Angle adjustable              |
|                        | Rated For Enclosed Fixture | No   |
|                        | Warranty                   | 5 years                                      |
| Compliance             | Safety Listing             | cULus-Listed                                 |
|                        | Location Rating            | Wet Location                                 |
|                        | Energy Star                | No   |
|                        | DLC Approved               | No   |
|                        | DLC ID                     | No   |

## Features & Specifications

|                         |  |
|-------------------------|--|
| <b>Construction</b>     | <ul style="list-style-type: none"> <li>• Pure light aluminum shell provides optimal heat dissipation and high lumen efficacy.</li> <li>• Clear polycarbonate lens over LEDs provides a high light efficacy. Type5, Type4 and Type3 for option.</li> <li>• CCT , Power and Beam Angle Select switches are placed inside the driver housing, built-in photocell</li> <li>• 6' power cable and 6' dimming cable included in all configurations</li> </ul> |
| <b>Mounting</b>         | <ul style="list-style-type: none"> <li>• SF bracket, TR bracket and RS bracket are available. Suitable for different installation scenarios. Can be mounted on round poles, square poles and walls.</li> </ul>   |
| <b>Performance Data</b> | <ul style="list-style-type: none"> <li>• Available in 3000K/4000/5000K selectable color temperature</li> <li>• 80+ CRI</li> <li>• Electrical ratings: 120-347 V</li> <li>• Estimated life of over 100 000 hours to L70</li> <li>• 0-10 V dimming driver. Dimming cables included with this luminaire</li> <li>• 6kV surge protection (standard)</li> <li>• Operating temperature : -40°C to 45°C (-40°F to 113°F)</li> </ul>                           |
| <b>Compliances</b>      | <ul style="list-style-type: none"> <li>• cULus certified for wet locations</li> <li>• IP65</li> </ul>  |

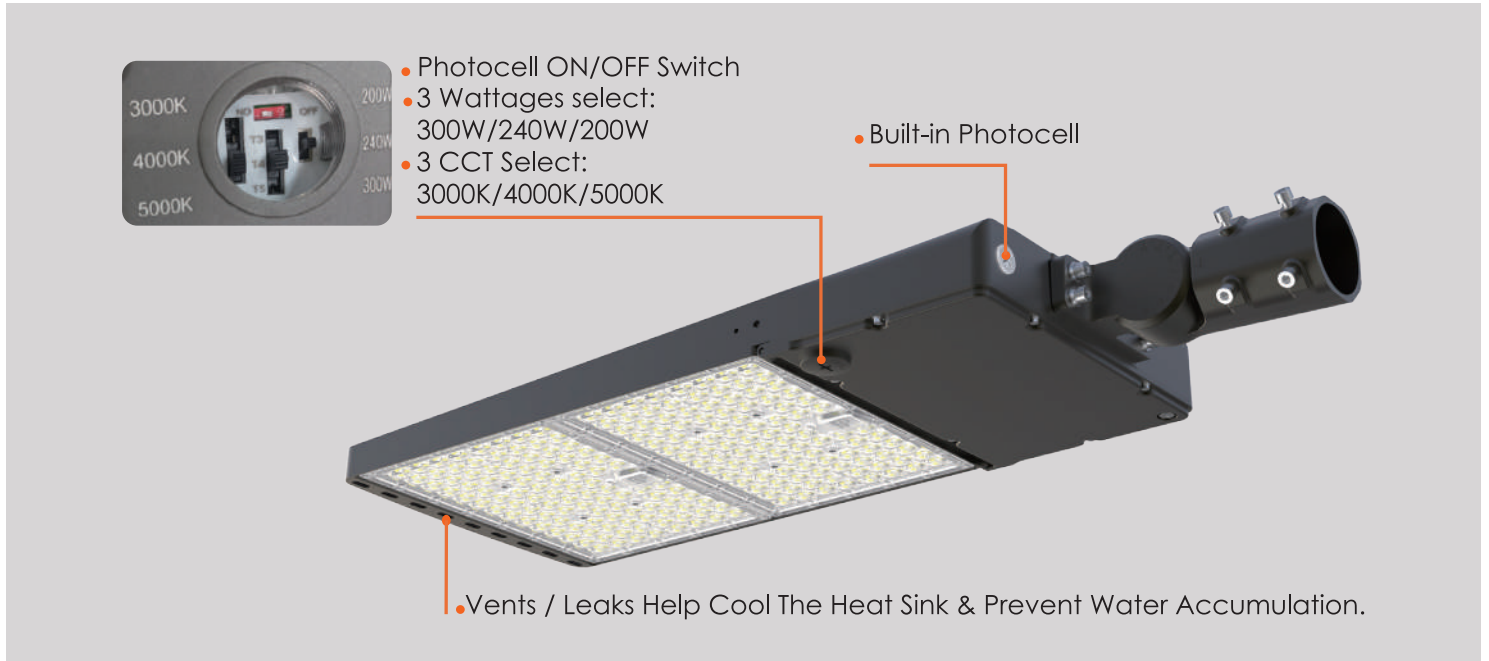
## Dimensions & Weights

| Model            | HD-SB05A-300WD-G-T3050-MSP |
|------------------|----------------------------|
| Length in.(cm)   | 26.77 (68.0)               |
| Widths in.(cm)   | 12.17 (30.9)               |
| Height in.(cm)   | 2.80 (7.1)                 |
| Net weight (lbs) | 13.36                      |



HD-SB05A-300WD-G-T3050-MSP

## Product Details



## Mini Photocell

| Part Number    | Test Environment | Start-up delay(S) | Off delay(S) | Startup illuminance value(Lux) | Off illuminance value(Lux) | Environment Temperature | Humidity | Precautions   |
|----------------|------------------|-------------------|--------------|--------------------------------|----------------------------|-------------------------|----------|---|
| Mini Photocell | Natural light    | ≤3S               | ≤3S          | ≤80                            | ≥150                       | -40°C~+60°C             | 99%RH    | When installing and using, the sensor head should face upwards to ensure good light transmission. |

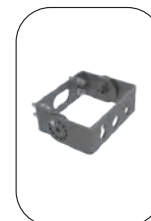
The preset delay time of ≤3 seconds can avoid misoperation at night due to spotlight or strike.

## Accessories (Order Separately)

| Order Code | Compatible With            |
|------------|----------------------------|
| SF bracket | HD-SB05A-300WD-G-T3050-MSP |
| TR bracket | HD-SB05A-300WD-G-T3050-MSP |
| RS bracket | HD-SB05A-300WD-G-T3050-MSP |



SF Bracket



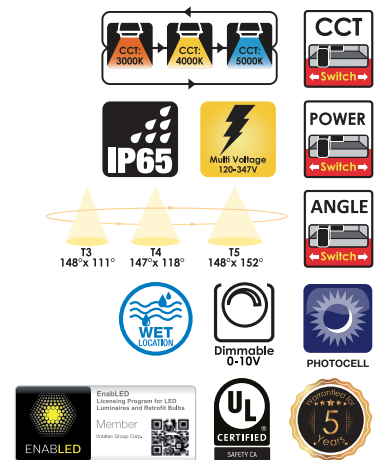
TR Bracket



RS Bracket

## Lumen Deatils

| Model No.:                 | Watts (W) | Beam angle | 3000K             |                   | 4000K             |                   | 5000K             |                   |
|----------------------------|-----------|------------|-------------------|-------------------|-------------------|-------------------|-------------------|-------------------|
|                            |           |            | Lumen Output (LM) | Efficiency (LM/W) | Lumen Output (LM) | Efficiency (LM/W) | Lumen Output (LM) | Efficiency (LM/W) |
| HD-SB05A-300WD-G-T3050-MSP | 200W      | T3         | 25780LM           | 135.51            | 28200LM           | 148.92            | 28203LM           | 145.94            |
|                            |           | T4         | 27765LM           | 141.16            | 30787LM           | 155.13            | 30156LM           | 152.03            |
|                            |           | T5         | 25418LM           | 132.69            | 28327LM           | 145.82            | 28018LM           | 142.90            |
|                            | 240W      | T3         | 33132LM           | 136.80            | 35304LM           | 149.36            | 35382LM           | 147.84            |
|                            |           | T4         | 33764LM           | 142.46            | 35653LM           | 153.48            | 36189LM           | 152.68            |
|                            |           | T5         | 32471LM           | 134.53            | 35472LM           | 146.57            | 34723LM           | 144.94            |
|                            | 300W      | T3         | 39391LM           | 130.92            | 42328LM           | 145.03            | 42320LM           | 142.24            |
|                            |           | T4         | 40300LM           | 137.69            | 43022LM           | 150.11            | 43542LM           | 149.13            |
|                            |           | T5         | 38569LM           | 128.76            | 41375LM           | 142.24            | 41879LM           | 140.35            |



Data is based upon tests performed in a controlled environment. Actual performance can vary depending on operating conditions. All products are subject to change or may be discontinued any time without notice. Please contact your Votatec customer service representative to confirm inventory levels at time of order

